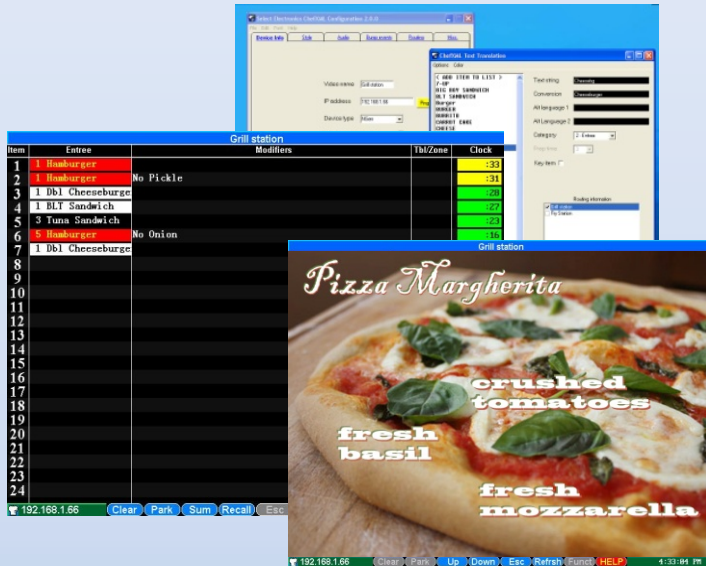


# ***ChefXML™***

## ***Product Overview***

*Version 06222011*

<http://www.selectelectronics.com/download.htm>



**The ChefXML™ Hospitality Suite software is the result of years of development to integrate the most desired features for KDS into one highly efficient and versatile package at a shockingly affordable price. Complete with management & maintenance utilities, there is no better software suite available to complement SEC KDS systems using our iPad or NGen controllers. For the wide spectrum of hospitality environments, the ChefXML™ brings kitchen automation to peak performance.**



### Feature Rich

- **Fine Dining / Quick Service Capability**
- **Get the most out of your KDS Screens (4x1, 4x2, 5x1, 5x2, and more)**
- **Preparation instructions at the touch of a button**
- **Enhance order accuracy**
- **Reduce ticket times to turn tables faster, increase volumes**
- **Flexible, XML-based**
- **Extensive POS/ECR Interfaces integrated**
- **Quick-turn Custom Interfaces**
- **Powerful Management Tools**
- **Manage Operations using Real-time and historical data**
- **Consolidate front-of-house and back-of-house efforts**
- **Eliminate system down time**



# ChefXML™ Product Summary

*Flexible Screen  
Layout*

**Item Display**

Item	Entree	Modifiers	Qty/Zone	Clock
1	Hamburger		1/25	01:35
2	Hamburger	No Pickle	1/21	01:35
3	Dbl Cheeseburger		1/22	01:35
4	BLT Sandwich		1/22	01:35
5	Tuna Sandwich		1/22	01:35
6	Hamburger	No Onion	1/16	01:35
7	Dbl Cheeseburger		1/09	01:35
8				

*On-Line Help*

**The iPad Bump Bar Functions**

- Clears Orders in Order BOX #1-8
- Scrolls Ord The Le
- Scrolls Ord The Ho
- Displays Fr Menu
- Displays User Help
- Hold key to HOLD HOLD
- Refreshes Orders on Screen
- Displays to return to order screen
- Hold key to CLOSE STATION
- Real Orders Received from Screen
- Display Key Focus Item Summary
- Park Drive-Thru Order
- Displays key to hold Ent order
- Hold key to clear AVG ORDER times
- Press ESCAPE to exit



*Prep Guides  
& Training*

**Split Screen & More...**

**International & Chinese**

Item	Entree	Mod
1	乳酪汉堡	
2	牛肉热狗	
3	牛肉热狗	
4	乳酪汉堡	
5	乳酪汉堡	
6	牛肉热狗	
7		
8		
9		
10		
11		
12		
13		
14		
15		
16		
17		
18		
19		
20		
21		
22		
23		
24		

*Advanced Management Tools*

**PRODUCTION STATISTICS REPORT**

Graph showing production statistics over time.

- Quick Setup
- Set Kitchen Goals
  - Prep Time, etc
- Detailed Reporting
  - Item Reports
  - Ticket Reports
  - Station Reports
- MS Excel Reports
  - Advanced Reports

*Digital Signage*

**Your Order Today**

1	2 Piece Dinner
2	Apple Pie
1	Coffee - Regular
1	Chicken Fingers - Lar
1	Side - Cole Slaw
1	Pepsi - Large
1	Fries - XLarge

**Pleasantville Grill King**

**Specials VALUE MEALS Specials**

Item	Price
Crispy Chicken	\$3.49
Veggie Burger	\$3.39
Deluxe Burger	\$3.59

Soft Drink Large Fries

Try these favorites today!

The Attendant Is Assisting Another Customer.  
One Moment Please...

# ChefXML™

## Feature Summary (1/2)

<b>Feature</b>	<b>ChefXML™</b>	<b>RODGold (Legacy)</b>
<b>Applications</b>	<u><b>New Applications</b></u> <ul style="list-style-type: none"> <li>•Table Service &amp; Quick Service</li> <li>•Adaptable to... Bar Service, Pizza, Takeout/Delivery, Non-Traditional</li> </ul>	<u><b>Standard</b></u> <ul style="list-style-type: none"> <li>•Quick Service</li> </ul>
<b>Screen Resolution</b>	<u><b>800x600 and higher</b></u> <ul style="list-style-type: none"> <li>•Display More Orders/Information</li> <li>•Larger displays, Better Readability</li> <li>•High quality fonts including Chinese</li> <li>•Images and Signage</li> </ul>	<u><b>640x480</b></u> <ul style="list-style-type: none"> <li>•Not optimal for larger display and detailed fonts</li> </ul>
<b>Data Representation</b>	<u><b>XML Format</b></u> <ul style="list-style-type: none"> <li>•KDS data accessible to user</li> <li>•Fault Tolerant data storage</li> <li>•Tailorable to POS interface</li> </ul>	<u><b>Binary &amp; Proprietary</b></u>
<b>Processing</b>	<u><b>Optimized</b></u> <ul style="list-style-type: none"> <li>•Use less computer resources</li> <li>•Runs on POS faster</li> <li>•More displays per network</li> </ul>	<u><b>Standard</b></u>
<b>Installation</b>	<u><b>Even Easier Installation</b></u> <ul style="list-style-type: none"> <li>•New troubleshooting tools</li> <li>•Learns menu items</li> </ul>	<u><b>Standard Installation</b></u>
<b>Reliability</b>	<u><b>More Robust</b></u> <ul style="list-style-type: none"> <li>•ChefXML auto backup and "system housekeeping" at midnight</li> <li>•XML data allows quick recovery</li> </ul>	<u><b>Standard</b></u>

<b>Feature</b>	<b>ChefXML™</b>	<b>RODGold (Legacy)</b>
<b>Reports</b>	<u><b>Rich Reporting at Server PC</b></u> <ul style="list-style-type: none"> <li>•Whole Store Speed of Service</li> <li>•By Item, Station, Ticket, Time</li> <li>•Up to 1 Year History</li> <li>•Advanced Reporting in Excel</li> <li>•Customize reports per your needs</li> <li>•Print, Email, and Save Reports</li> </ul>	<u><b>Single Screen Speed of Service at KDS Only</b></u>
<b>Screen Features</b>	<u><b>Optimized Screen Layout</b></u> <ul style="list-style-type: none"> <li>•Sliding Menus, Status Bar</li> <li>•Real time Summary Screen</li> <li>•Customize every Font and Color</li> <li>•Customize Screen Layout</li> <li>•3/4/5x1, 3/4/5x2, 8x2, Line Items</li> </ul>	<u><b>Format Customization Only</b></u>
<b>Interfaces</b>	<u><b>Infinitely Flexible</b></u> <ul style="list-style-type: none"> <li>•Integrate POS interface in days</li> <li>•Simplified ECR Support</li> <li>•Anything that can print to a Network Printer can have KDS</li> <li>•Full SEC TouchBar Features</li> </ul>	<u><b>Existing Enhanced Record Format Support Only</b></u>
<b>VAR Integration</b>	<u><b>Full Demonstration Downloadable</b></u> <ul style="list-style-type: none"> <li>•No Hardware Required to Test</li> <li>•On-Screen Bumpbar</li> </ul>	<u><b>Passive View Only</b></u>
<b>VAR API</b>	<u><b>New VAR API</b></u> <ul style="list-style-type: none"> <li>•Allows POS/PC to interface directly to access real-time KDS information</li> </ul>	<u><b>None</b></u>

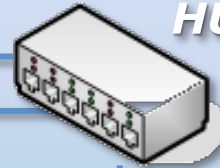
# Network Topology

## Terminal KDS Server

**POS  
Terminals,  
or PCs**



**ETHERNET  
HUB**



**NGenSX\***

**NGenSX\***

**IPadSX\***

*\*Or NgenSX + TouchBar*

**TouchBar**

*\*Or IPadSX*

**TouchBar**

*\*Or IPadSX*

# Network Topology

## Backroom KDS Server / PC

**POS  
Terminals,  
or PCs**



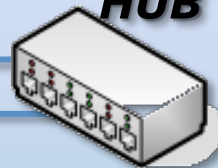
**BACKROOM  
SERVER OR PC**



**CHEF\*\***  
Hospitality  
Management  
Software

*\*\*Or Third-Party  
Application*

**ETHERNET  
HUB**



**NGenSX\***

**NGenSX\***



**IPadSX\***

**TouchBar**

**TouchBar**

*\*Or NgenSX + TouchBar*

*\*Or IpadSX*

*\*Or IpadSX*

# RS232 or Network Printer Network Topology

**Electronic Cash Register, POS, or PC**



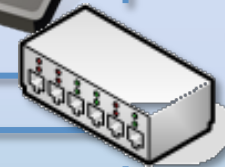
RS232 or  
Network Printer  
Interface

**BACKROOM  
SERVER OR PC**

**CHEF\*\***  
Hospitality  
Management  
Software

\*\*Or Third-Party  
Application

**ETHERNET  
HUB**



**NGenSX\***



**NGenSX\***



**IPadSX\***

\*Or NgenSX + TouchBar



**TouchBar**

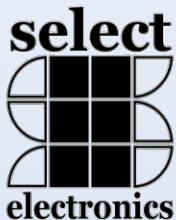
\*Or IpadSX



**TouchBar**

\*Or IpadSX





# Select Electronics Corporation Company Overview

*Over four decades of engineering and design of video, communications, and POS hardware & software technologies have made Select Electronics Corporation the premier supplier of Kitchen Display Systems to the hospitality industry. Today SEC still has the most advanced and affordable KDS available to interface with just about every POS register in the industry.*

### Company Overview

- Fortune 500 hospitality establishments have relied on our products for over 15 years
- Award-winning software and customer service
- Low-overhead, debt-free, small woman-owned business
- Two state-of-the-art ISO:9001 manufacturing partner facilities
- Over 100 people across the globe are working to make SEC products

***We have established the most efficient methods to produce the finest products at cost savings our customers surely appreciate...***



***Don't see your application listed?***

***We interface to over 100 POS/ECR applications not listed here... plus we can develop an interface (in days) at no additional cost.***

***Contact Us: [sales@selectelectronics.com](mailto:sales@selectelectronics.com)***